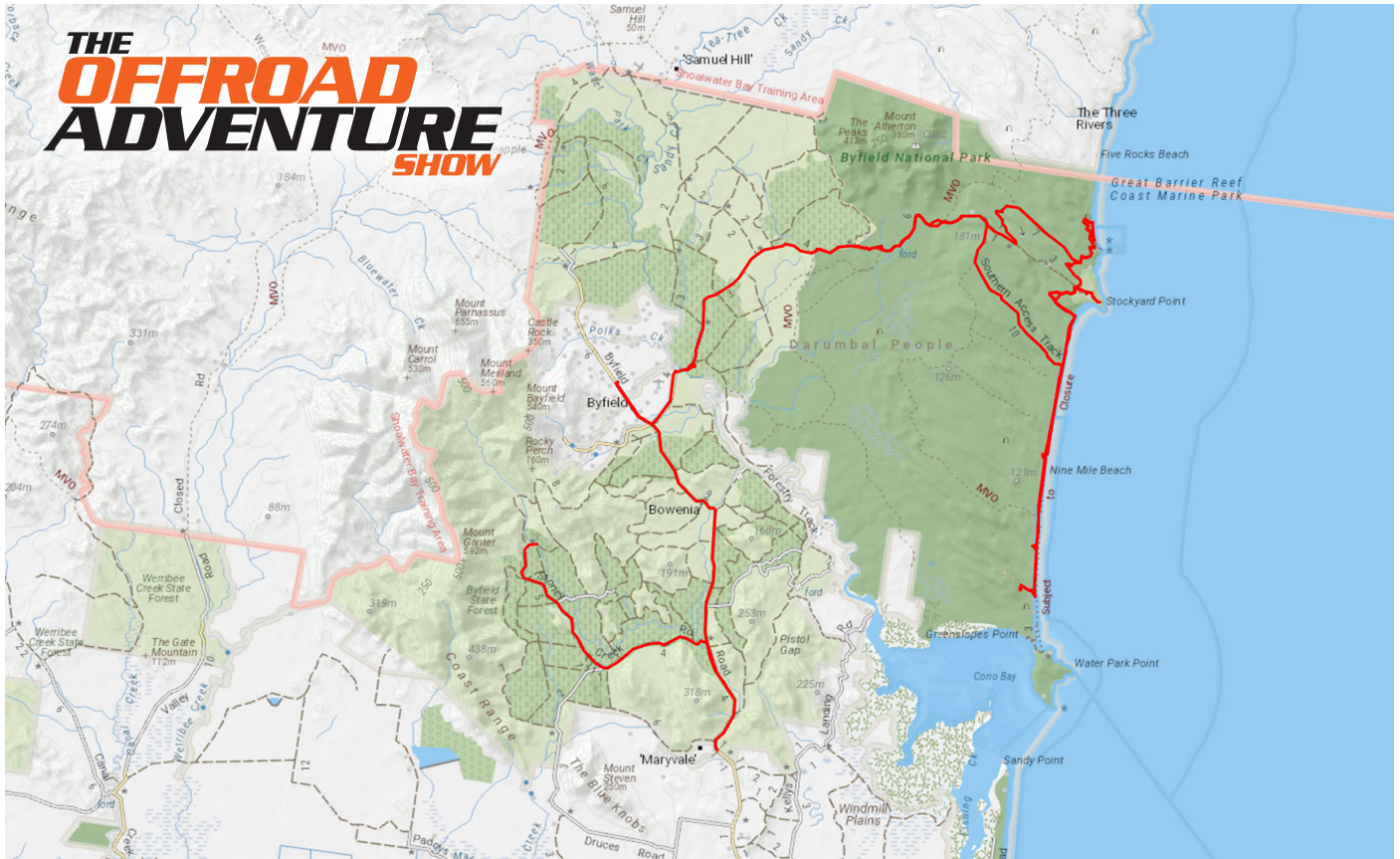


BYFIELD NATIONAL PARK



TRACK NOTES:

North of the Tropic of Capricorn lies the gateway to Byfield National Park, a spectacular pocket of magnificent 4X4 escapes through the wilderness.

DISTANCE: 124km

NEARBY TRACKS: Blackdown Tableland National Park

NEAREST TOWN: Yeppoon

LOCAL CONTACT:

Queensland Parks and Wildlife Service

13 QGOV (13 74 68)

WATCH THE ADVENTURE *HERE:*

