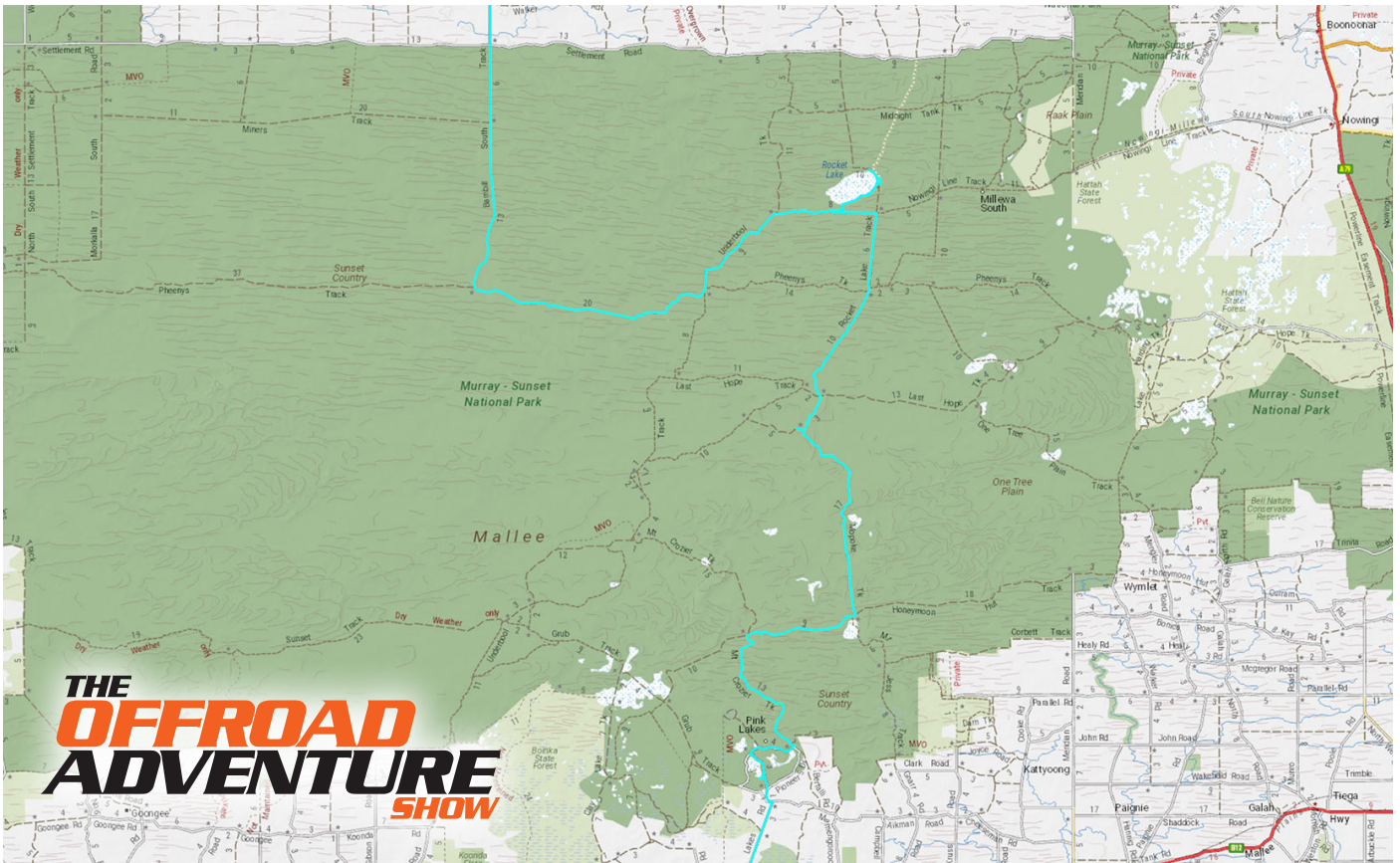


MURRAY-SUNSET NATIONAL PARK



TRACK NOTES:

Murray-Sunset National Park, in Victoria's far north-west corner, is in one of the few remaining semi-arid regions in the world where the environment is relatively untouched. With its wide open landscapes, breathtaking sunsets and starry nights, its vastness and isolation will take more than a day to explore.

DISTANCE: 343km

NEARBY TRACKS: Wyperfeld National Park, Big Desert State Forest

NEAREST TOWN: Mildura

LOCAL CONTACT:

Parks Victoria

13 19 63

WATCH THE ADVENTURE *HERE:*

